

INSTRUCTION MANUAL



CFM100 CompactFlash[®] Module

Revision: 12/10



Copyright © 2000-2010
Campbell Scientific, Inc.

WARRANTY AND ASSISTANCE

This equipment is warranted by CAMPBELL SCIENTIFIC (CANADA) CORP. ("CSC") to be free from defects in materials and workmanship under normal use and service for **twelve (12) months** from date of shipment unless specified otherwise. ***** **Batteries are not warranted.** ***** CSC's obligation under this warranty is limited to repairing or replacing (at CSC's option) defective products. The customer shall assume all costs of removing, reinstalling, and shipping defective products to CSC. CSC will return such products by surface carrier prepaid. This warranty shall not apply to any CSC products which have been subjected to modification, misuse, neglect, accidents of nature, or shipping damage. This warranty is in lieu of all other warranties, expressed or implied, including warranties of merchantability or fitness for a particular purpose. CSC is not liable for special, indirect, incidental, or consequential damages.

Products may not be returned without prior authorization. To obtain a Return Merchandise Authorization (RMA), contact CAMPBELL SCIENTIFIC (CANADA) CORP., at (780) 454-2505. An RMA number will be issued in order to facilitate Repair Personnel in identifying an instrument upon arrival. Please write this number clearly on the outside of the shipping container. Include description of symptoms and all pertinent details.

CAMPBELL SCIENTIFIC (CANADA) CORP. does not accept collect calls.

Non-warranty products returned for repair should be accompanied by a purchase order to cover repair costs.



CAMPBELLSCIENTIFIC
CANADA CORP.

11564 - 149 street - edmonton - alberta - T5M 1W7
tel 780.454.2505 fax 780.454.2655

www.campbellsci.ca

PLEASE READ FIRST

About this manual

Please note that this manual was originally produced by Campbell Scientific Inc. (CSI) primarily for the US market. Some spellings, weights and measures may reflect this origin.

Some useful conversion factors:

Area:	1 in ² (square inch) = 645 mm ²
Length:	1 in. (inch) = 25.4 mm 1 ft (foot) = 304.8 mm 1 yard = 0.914 m 1 mile = 1.609 km
Mass:	1 oz. (ounce) = 28.35 g 1 lb (pound weight) = 0.454 kg
Pressure:	1 psi (lb/in ²) = 68.95 mb
Volume:	1 US gallon = 3.785 litres

In addition, part ordering numbers may vary. For example, the CABLE5CBL is a CSI part number and known as a FIN5COND at Campbell Scientific Canada (CSC). CSC Technical Support will be pleased to assist with any questions.

CFM100 Table of Contents

PDF viewers note: These page numbers refer to the printed version of this document. Use the Adobe Acrobat® bookmarks tab for links to specific sections.

1. CFM100 CompactFlash® Module Overview	1-1
1.1 Specifications.....	1-1
1.2 Physical Description	1-2
1.3 Power.....	1-3
1.3.1 Primary Power	1-3
1.3.2 Backup Power and Data Retention	1-3
1.4 Function	1-3
1.5 Quick Start Procedure.....	1-3
1.5.1 Preparation	1-3
1.5.2 Programming the Datalogger to Send Data to the CFM100	1-3
1.5.3 Data Retrieval	1-4
2. File Formats	2-1
2.1 Data Files.....	2-1
2.2 Program Files.....	2-1
2.3 Power-up Files (powerup.ini).....	2-1
2.3.1 Creating and Editing Powerup.ini.....	2-2
2.3.2 Applications	2-3
2.3.3 Program Execution.....	2-4
2.3.4 Example Power-up.ini Files.....	2-4
2.3 Camera Files	2-5
3. Programming	3-1
3.1 The CardOut Instruction.....	3-1
3.2 Program Examples.....	3-1
3.2.1 Ring Mode	3-1
3.2.2 Fill and Stop Mode.....	3-2
3.2.3 Mixed Modes	3-2
3.3 Table Size and Mode	3-4
4. Data Retrieval.....	4-1
4.1 Via a Communication Link.....	4-1
4.2 Transporting CF Card to Computer.....	4-1
4.2.1 Converting File Formats	4-1
4.2.2 Reinserting the Card	4-2
4.2.3 Card Swapping.....	4-2

Appendices

A. Formatting CF Card	A-1
A.1 Windows Explorer	A-1
A.2 CR1000KD	A-2
A.3 LoggerNet File Control.....	A-2
B. PC/CF Card Information	B-1

Figure

1-1. CompactFlash Module.....	1-2
2.3.1-1. Powerup.ini Commands.....	2-3

Tables

B-1. CRBasic Dataloggers and PC/CF Cards	B-1
B-2. SLC and MLC Performance Characteristics.....	B-1
B-3. Comparison of Industrial and Commercial Grade Cards	B-2
B-4. Silicon Systems and Campbell Scientific PC/CF Model Numbers....	B-2

Section 1. CFM100 CompactFlash[®] Module Overview

Campbell Scientific's CFM100 CompactFlash[®] Module stores the datalogger's data on a removable CompactFlash (CF) card. The CFM100 module connects to the datalogger via the 40-pin peripheral port. Currently, only our CR1000 and CR3000 dataloggers have the 40-pin peripheral port; the CFM100 is not compatible with the CR200-series, CR800, CR850, CR5000, and CR9000X dataloggers.

This section of the manual surveys the CFM100 and its function. It also explains how to quickly begin using a CFM100 for straightforward data storage operations. The remainder of the manual is a technical reference which describes in detail such operations as: file formats, datalogger programming and data retrieval.

1.1 Specifications

Storage Capacity:	Depends on card size (up to 2 GB supported)
Dimensions:	4.0" x 3.3" x 2.6" (10.0 x 8.3 x 6.5 cm)
Weight:	132.5 g
Operating Temp. Range:	-35°C to +65°C (-55°C to +85°C optional)
Typical Access Speed:	200 - 400 Kb/sec
Memory Configuration:	User selectable for either ring style (default) or fill and stop.
Power Requirements:	12 V supplied through CR1000 peripheral port

Power:

The CFM100 receives power from the datalogger through the peripheral port. The following currents are for the CR1000 with the CFM100 attached and can vary with the card.

Writing to card with RS-232 port active:	30 mA (avg.)
Reading from card with RS-232 port active:	20 mA (avg.)
Writing to card with RS-232port not active:	20 mA (avg.)
Reading from card with RS-232 port not active:	15 mA (avg.)
Low Power Standby State:	700–800 μ A
Maintenance:	There are no user-serviceable parts inside the module.



FIGURE 1-1. CompactFlash Module

1.2 Physical Description

The CFM100 connects to a datalogger peripheral port and has a slot for a Type I or Type II CompactFlash (CF) card (3.3V, 75 mA).

There is one red-green-orange LED (light emitting diode) and two buttons: control and eject. The LED indicates the status of the module. The LED will flash red when the CF card is being accessed, solid green when it is OK to remove the card, solid orange to indicate an error, and flashing orange if the card has been removed and has been out long enough that CPU memory has wrapped and data is being overwritten without being stored to the card. The control button must be pressed before removing a card to allow the datalogger to store any buffered data to the card and then power it off.

1.3 Power

1.3.1 Primary Power

The CompactFlash Module is powered by 12 VDC received from the datalogger through the peripheral port.

1.3.2 Backup Power and Data Retention

The module accepts CompactFlash (CF) cards which do not require power to retain data.

Typically, a CF card can be erased and rewritten a minimum of 100,000 times. Industrial CF cards, graded for 2,000,000 write cycles, are recommended for most applications.

1.4 Function

The CFM100/CF card combination can be used to expand the datalogger's memory, transport data/programs from the field site(s) to the office, upload datalogger power up functions, and store JPEG images from the CC640 camera. Data stored on cards can be retrieved through a communication link to the datalogger or by removing the card and carrying it to a computer. The computer can read the CF card either with the CF1 adapter or 17752 Reader/Writer. The CF1 adapter allows the PC's PCMCIA card slot to read the CF card; the 17752 Reader/Writer allows the PC's USB port to read the CF card. User-supplied CF adapters may also be used.

CAUTION

LoggerNet's File Control should not be used to retrieve data from a CompactFlash card. Using File Control to retrieve the data can result in a corrupted data file.

1.5 Quick Start Procedure

This Section describes the basics of storing and retrieving datalogger data. These operations are discussed in detail in Sections 3 and 4 of this manual.

1.5.1 Preparation

CAUTION

Always power down the datalogger before installing or removing the CFM100 to/from the datalogger.

After powering down the datalogger, plug the CFM100 into the datalogger peripheral port. Restore power to the datalogger. Insert formatted CF card. (For instructions on formatting a CF card, see Appendix A.)

1.5.2 Programming the Datalogger to Send Data to the CFM100

The CardOut instruction is used in the datalogger program to send data to the CF card. The CardOut instruction must be entered within each DataTable declaration that is to store data to the CF card. The file is saved to the card with the name stationname.tablename and a .DAT extension.

The CardOut instruction has the following parameters:

StopRing: A constant is entered for the StopRing parameter to specify whether the DataTable created should be a Ring Mode table (0) or a Fill and Stop table (1).

Size: The Size parameter is the minimum number of records that will be included in the DataTable. If -1000 is entered, the size of the file on the card will be the same as the size of the internal table on the datalogger. If any other negative number is entered, the memory that remains after creating any fixed-size tables on the card will be allocated to this table. If multiple DataTables are set to a negative number, the remaining memory will be divided among them. The datalogger attempts to size the tables so that all of them will be full at the same time

In the following example, the minimum batt_voltage and a sample of PTemp is written to the card each time the data table is called. The StopRing parameter is 0 for Ring mode. This means that once the data table is full, new data will begin overwriting old data. The size parameter is -1, so all available space on the card will be allocated to the table.

DataTable (Table1,1,-1)

CardOut (0,-1)

Minimum (1,batt_volt,FP2,0,False)

Sample (1,PTemp,IEEE4)

EndTable

CAUTION To prevent losing data, collect data from the CF card before sending the datalogger a new or modified program. When a program is sent to the datalogger using the Send button in the Connect screen of LoggerNet or PC400, an attribute is sent along with the program that commands the datalogger to erase all data on the CF card from the currently running program.

1.5.3 Data Retrieval

Data stored on cards can be retrieved through a communication link to the datalogger or by removing the card and carrying it to a computer with a CF adapter. With large files, transferring the CF card to a computer may be faster than collecting the data over a communication link. Data retrieval is discussed in detail in Section 4.

CAUTION Removing a card while it is active can cause garbled data and can actually damage the card. **Always** press the control button and wait for a green light before removing card.

CAUTION LoggerNet's File Control should not be used to retrieve data from a CompactFlash card. Using File Control to retrieve the data can result in a corrupted data file.

Section 2. File Formats

This section covers the different types of files stored on the CF card

2.1 Data Files

The datalogger stores data on the CF card in TOB3 Format. TOB3 is a binary format that incorporates features to improve reliability of the CF cards. TOB3 allows the accurate determination of each record's time without the space required for individual time stamps.

TOB3 format is different than the data file formats created when data are collected via a communications link. Data files read directly from the CF card generally need to be converted into another format to be used

When TOB3 files are converted to another format, the number of records may be slightly greater or less than the number requested in the data table declaration. There is always some additional memory allocated. When the file is converted this will result in additional records if no lapses occurred. If more lapses occur than were anticipated, there may be fewer records in the file than were allocated.

The CardConvert software included in LoggerNet, PC400, and PC200 will convert data files from one format to another.

2.2 Program Files

The CF card can be used to provide extra program storage space for the datalogger. Program files can be copied to the card while it is attached as a drive on the computer. They can also be sent to the card using LoggerNet's File Control. They may also be copied from CPU memory to the card (or from the card to CPU memory) using the keyboard display.

2.3 Power-up Files (powerup.ini)

Users can insert a properly-configured CF card into the CFM100, cycle through the datalogger power, and have power up functions automatically performed.

Power-up functions of CompactFlash(R) cards can include

- a) Sending programs to the CR1000 or CR3000
- b) Setting attributes of datalogger program files
- c) Setting disposition of old CF files
- d) Sending an OS to the CR1000 or CR3000
- e) Formatting memory drives
- f) Deleting data files

CAUTION

Test the power-up functions in the office before going into the field to ensure the power-up file is configured correctly.

The key to the CF power-up function is the powerup.ini file, which contains a list of one or more command lines. At power-up, the powerup.ini command line is executed prior to compiling the program. Powerup.ini performs three operations:

- 1) Copies the specified program file to a specified memory drive.
- 2) Sets a file attribute on the program file
- 3) Optionally deletes CF data files from the overwritten (just previous) program.

Powerup.ini takes precedence during power-up. Though it sets file attributes for the programs it uploads, its presence on the CF does not allow those file attributes to control the power-up process. To avoid confusion, either remove the CF card or delete the powerup.ini file after the powerup.ini upload.

2.3.1 Creating and Editing Powerup.ini

Powerup.ini is created with a text editor, then saved as "powerup.ini".

NOTE

Some text editors (such as WordPad) will attach header information to the powerup.ini file causing it to abort. Check the text of a powerup.ini file with the datalogger keyboard display to see what the datalogger actually sees.

Comments can be added to the file by preceding them with a single-quote character ('). All text after the comment mark on the same line is ignored.

Syntax

Syntax allows functionality comparable to File Control in LoggerNet. Powerup.ini is a text file that contains a list of commands and parameters. The syntax for the file is:

Command,File,Device

where

Command = one of the numeric commands in Table 2.3.1-1.

File = file on CF associated with the action. Name can be up to 22 characters.

Device = the device to which the associated file will be copied to.

Options are CPU:, USR:, and CRD:. If left blank or with invalid option, will default to CPU:.

Command	Description
1	Run always, preserve CF data files
2	Run on power-up
5	Format
6	Run now, preserve CF data files
9	Load OS (File = .obj)
13	Run always, erase CF data files now
14	Run now, erase CF data files now

By using PreserveVariables() instruction in the datalogger CRBASIC program, with options 1 & 6, data and variables can be preserved.

EXAMPLE 2.3.1-1. Powerup.ini code.

```
'Command = numeric power-up command
'File = file on CF associated with the action
'Device = the device to which File will be copied. Defaults to CPU:

'Command,File,Device
13,Write2CRD_2.cr1,CPU:
```

2.3.2 Applications

- Commands 1, 2, 6, 13, and 14 (Run Now and / or Run On Power-up). If a device other than CRD: drive is specified, the file will be copied to that device.
- Command 1, 2, 13 (Run On Power-up). If the copy (first application, above) succeeds, the new Run On Power-up program is accepted. If the copy fails, no change will be made to the Run On Power-up program.
- Commands 1, 6, 13, and 14 (Run Now). The Run Now program is changed whether or not the copy (first application, above) occurs. If the copy does succeed, the Run Now program will be opened from the device specified.
- Commands 13 and 14 (Delete Associated Data). Since CRD:powerup.ini is only processed at power-up, there is not a compiled program to delete associated data for. The information from the last running program is still available for the datalogger to delete the files used by that program.

2.3.3 Program Execution

After File is processed, the following rules determine what datalogger program to run:

- 1) If the Run Now program is changed then it will be the program that runs.
- 2) If no change is made to Run Now program, but Run on Power-up program is changed, the new Run on Power-up program runs.
- 3) If neither Run on Power-up nor Run Now programs are changed, the previous Run on Power-up program runs.

2.3.4 Example Power-up.ini Files

Example 2.3.4-1 through Example 2.3.4-6 are example powerup.ini files.

EXAMPLE 2.3.4-1. Run Program on Power-up.

```
'Copy pwrup.cr1 to USR:, will run only when powered-up later  
2,pwrup.cr1,usr:
```

EXAMPLE 2.3.4-2. Format the USR: drive.

```
'Format the USR: drive  
5,,usr:
```

EXAMPLE 2.3.4-3. Send OS on Power-up.

```
'Load this file into FLASH as the new OS  
9,CR1000.Std.04.obj
```

EXAMPLE 2.3.4-4. Run Program from CRD: drive.

```
'Leave program on CRD:, run always, erase CRD: data files  
13,toobigforcpu.cr1,crd:
```

EXAMPLE 2.3.4-5. Run Program Always, Erase CF data.

```
'Run always, erase CRD: data files  
13,pwrup_1.cr1,crd
```

EXAMPLE 2.3.4-6. Run Program Now, Erase CF data.

```
'Copy run.cr1 to CPU:, erase CF data, run CPU:run.cr1, but not if later powered-up  
14,run.cr1,cpu:
```

2.4 Camera Files

JPEG images taken by a digital camera connected to the datalogger can be stored to the CF card rather than CPU memory. This is done by configuring the PakBus setting “Files Manager” for the datalogger. This can be done using the Device Configuration Utility or PakBus Graph.

Section 3. Programming

3.1 The CardOut Instruction

The CardOut Instruction is used to send data to a CF card. The CardOut Instruction must be entered within each DataTable declaration that is to store data to the CF card. Data is stored to the card when a call is made to the data table.

CardOut (StopRing, Size)

Parameter & Data Type	Enter						
StopRing <i>Constant</i>	A code to specify if the Data Table on the CF card is fill and stop or ring (newest data overwrites oldest).						
	<table border="1"> <thead> <tr> <th>Value</th> <th>Result</th> </tr> </thead> <tbody> <tr> <td>0</td> <td>Ring</td> </tr> <tr> <td>1</td> <td>Fill and Stop</td> </tr> </tbody> </table>	Value	Result	0	Ring	1	Fill and Stop
	Value	Result					
0	Ring						
1	Fill and Stop						
Size <i>Constant</i>	The size to make the data table. The number of data sets (records) for which to allocate memory in the CF card. Each time a variable or interval trigger occurs, a line (or row) of data is output with the number of values determined by the Output Instructions within the table. This data is called a record.						
	<p>Note Enter -1000 and the size of the table on the card will match the size of the internal table on the datalogger</p> <p>Enter any other negative number and all remaining memory (after creating any fixed size data tables) will be allocated to the table or partitioned among all tables with a negative value for size. The partitioning algorithm attempts to have the tables full at the same time.</p>						

3.2 Program Examples

3.2.1 Ring Mode

The following program outputs the maximum and minimum of the panel temperature to the card once a second. The first parameter of the CardOut instruction is 0, which sets the table on the card to ring mode. The second parameter is negative, so all available memory on the card will be allocated to the data table. Once all available memory is used, new data will begin overwriting the oldest data.

PROGRAM

```
'CRI1000

Public temp

DataTable (Table1,1,-1)
  CardOut (0, -1)
  Maximum (1,temp,FP2,False,False)
  Minimum (1,temp,FP2,False,False)
EndTable
```

```
BeginProg
  Scan(1,SEC,3,0)
    PanelTemp(temp,250)
    CallTable Table1
  NextScan
EndProg
```

3.2.2 Fill and Stop Mode

The following program outputs a sample of the panel temperature to the card once a second. The first parameter of the CardOut instruction is 1, which sets the table on the card to fill and stop mode. The second parameter (1000) is the number of records which will be written before the table is full and data storage stops. Once 1000 records have been stored, data storage will stop.

PROGRAM

```
'CR1000

Public temp

DataTable (Table1,1,1000)
  CardOut (1,1000)
  Sample(1,temp,IEEE4)
EndTable

BeginProg
  Scan(1,SEC,3,0)
    PanelTemp(temp,250)
    CallTable Table1
  NextScan
EndProg
```

To reset a table after a fill and stop table has been filled and stopped, either use the reset button in LoggerNet (LN Connect | Datalogger | View Station Status | Table Fill Times, Reset Tables button) or use the CRBasic ResetTable instruction.

3.2.3 Mixed Modes

The following program stores 4 data tables to the card. The first two tables will output samples of the panel temperature and battery voltage to the card once a second. The first parameter of the CardOut instructions is 1, which sets the tables on the card to fill and stop mode. The second parameter is 1000, so 1000 records will be written to each table before stopping.

Tables 3 and 4 will output the maximum and minimum of the panel temperature and battery voltage to the card once every five seconds. (The tables will be called once a second. The DataInterval instruction causes data to only be stored every five seconds.) The first parameter of the CardOut instructions is 0, which sets the tables on the card to ring mode. The second parameter is negative, so all available memory on the card will be allocated to

these tables, once space for the fixed-size tables has been allocated. The datalogger will attempt to size the tables so that both of them will be full at the same time.

PROGRAM

```
'CR1000

Public temp
Public batt

DataTable (Table1,1,-1)
  CardOut (1,1000)
  Sample(1,temp,IEEE4)
EndTable

DataTable (Table2,1,-1)
  CardOut (1,1000)
  Sample(1,batt,IEEE4)
EndTable

DataTable (Table3,1,1000)
  DataInterval(0,5,sec,4)
  CardOut (0 ,-1)
  Maximum (1,temp,FP2,False,False)
  Minimum (1,temp,FP2,False,False)
EndTable

DataTable (Table4,1,1000)
  DataInterval(0,5,sec,4)
  CardOut (0 ,-1)
  Maximum (1batt,FP2,False,False)
  Minimum (1,batt,FP2,False,False)
EndTable

BeginProg
  Scan(1,SEC,3,0)
  PanelTemp(temp,250)
  Battery(Batt)
  CallTable Table1
  CallTable Table2
  CallTable Table3
  CallTable Table4
  NextScan
EndProg
```

3.3 Table Size and Mode

The size of each data table in CPU memory is set as part of the DataTable instruction and the size of each data table on the CF card is set with the CardOut instruction. Because they are set independently, they can be different. It is important to note that if the CPU memory is set to fill and stop mode, once a table is full, all data storage to the table will stop. No more records will be stored to the CPU memory or the card.

Section 4. Data Retrieval

Data stored on CF cards can be retrieved through a communication link to the datalogger or by removing the card and carrying it to a computer.

4.1 Via a Communication Link

Data can be transferred to a computer via a communications link using one of Campbell Scientific's datalogger support software packages (e.g., PC200, PC400, LoggerNet). There is no need to distinguish whether the data is to be collected from the CPU memory or a CF card. The software package will look for data in the CPU memory and then the CF card.

4.2 Transporting CF Card to Computer

With large files, transferring the CF card to a computer may be faster than collecting the data over a link.

CAUTION

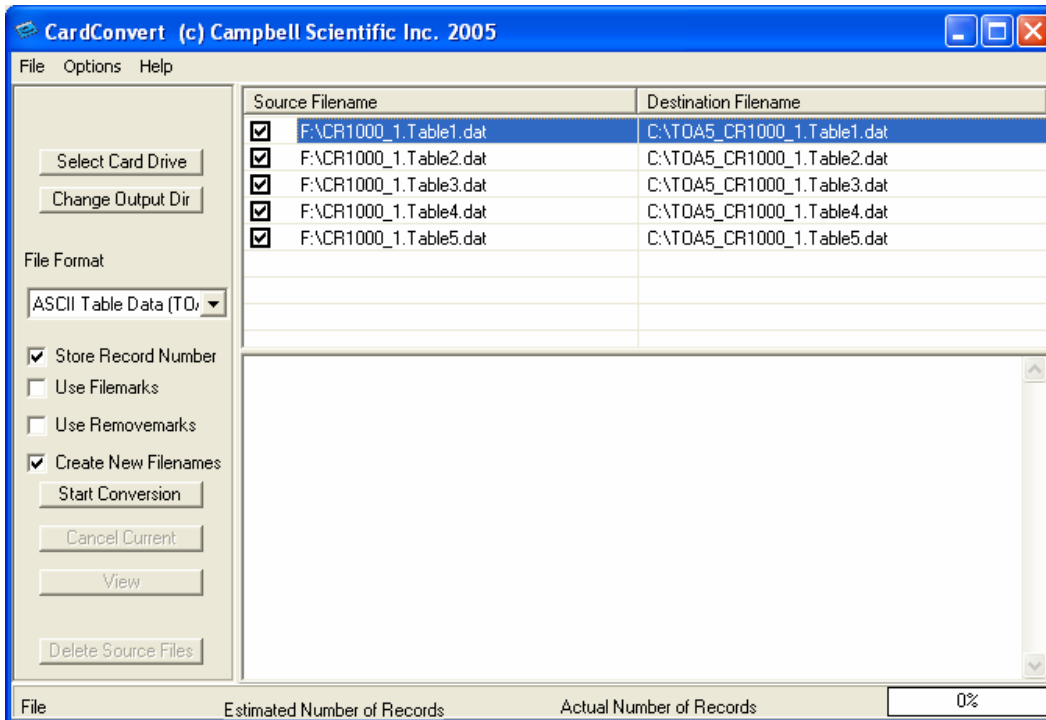
Removing a card while it is active can cause garbled data and can actually damage the card. Do not switch off the CR1000 power if a card is present and active.

To remove a card, press the control button on the CFM100. The CR1000 or CR3000 will transfer any buffered data to the card and then power it off. The Status LED will turn green when it is OK to remove the card. The card will be reactivated after 20 seconds if it is not removed.

When the CF card is inserted in a computer, the data files can be copied to another drive or used directly from the CF card just as one would from any other disk. In most cases, however, it will be necessary to convert the file format before using the data.

4.2.1 Converting File Formats

Files can be converted using LoggerNet's CardConvert. Begin by using "Select Output Drive" to indicate where the files to be converted are stored. Then use "Change Output Dir" to choose where you would like the converted files to be stored. Place check marks next to the files to be converted. A default destination filename is given. It can be changed by right-clicking with the filename highlighted. Use the drop-down to select what file format to convert to. Then press "Start Conversion" to begin converting files. Green checkmarks will appear next to each filename as conversion is complete.



4.2.2 Reinserting the Card

If the same card is inserted again into the CFM100, the datalogger will store all data to the card that has been generated since the card was removed that is still in the CPU memory. If the data tables have been left on the card, new data will be appended to the end of the old files. If the data tables have been deleted, new ones will be generated.

NOTE

Check the status of the card before leaving the datalogger. If a CF card was not properly accepted, the CFM100 will flash orange. In that case, the user needs to reformat and erase all data contained on the CF card. Formatting or erasing a CF card might be done on a PC or datalogger. The procedure for formatting a CF card is explained in Section OV5 of the CR1000 and CR3000 manuals.

4.2.3 Card Swapping

When transporting a CF card to a computer to retrieve data, most users will want to use a second card to ensure that no data is lost. For this method of collection, use the following steps.

1. Insert formatted card (“CF-A”) in CFM100 attached to datalogger.
2. Send Program containing CardOut instruction(s).

3. When ready to retrieve data, press CFM100 button to remove card. LED will show red while the most current data is stored to the card and then go green. Eject card, while LED is green.
4. Put in clean card (“CF-B”).
5. Use CardConvert to copy data from CF-A to PC and convert. The default CardConvert filename will be TOA5_stationname_tablename.dat. Once the data is copied, use Windows Explorer to delete all data files from the card. NOTE: Windows98 and WindowsME users need to shift-delete to completely delete files. Using standard delete may create an invisible recycle bin on the CF card.
6. At the next card swap, eject CF-B and insert the clean CF-A.
7. Running CardConvert on CF-A will result in separate data files containing records since CF-A was ejected. Card Convert can increment the filename to TOA5_stationname_tablename_0.dat.
8. The data files can be joined using a software utility such as WordPad or Excel.

CardConvert File	CF-A Record Numbers	CF-B Record Numbers
TOA5_tablename.dat	0-100	
TOA5_tablename.dat		101-1234
TOA5_tablename.dat	1235-....	

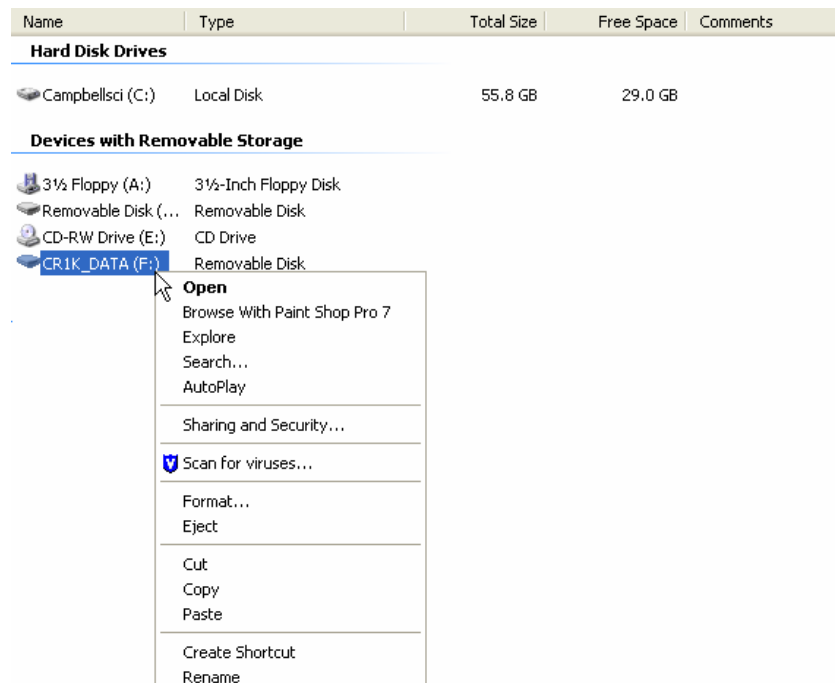
Appendix A. Formatting CF Card

The CF card can be formatted using 1) Windows Explorer, 2) the CR1000KD or 3) LoggerNet File Control.

A.1 Windows Explorer

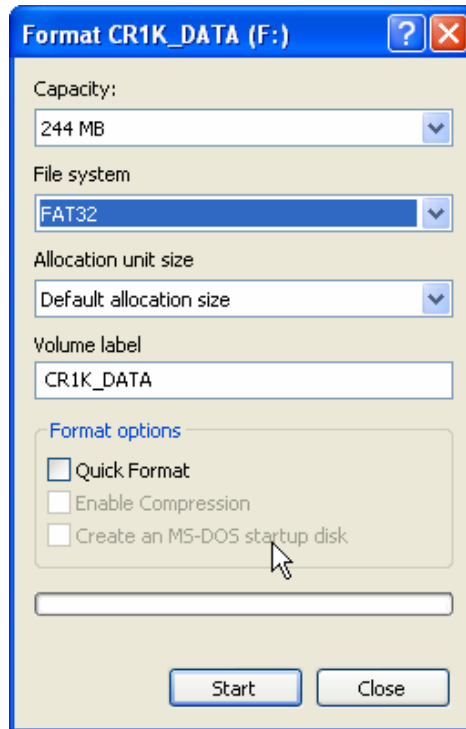
To format card using Windows Explorer:

- 1) Insert CF card into CF adapter or CF reader.
- 2) Windows Explorer should identify a drive as a removable disk (F:).
- 3) Select that drive and right click.



- 4) Choose Format.

- 5) Choose FAT32 under file system, give the card a label, then Start. (The CR1000 will work with either FAT or FAT 32.)



A.2 CR1000KD

To format card using the CR1000KD:

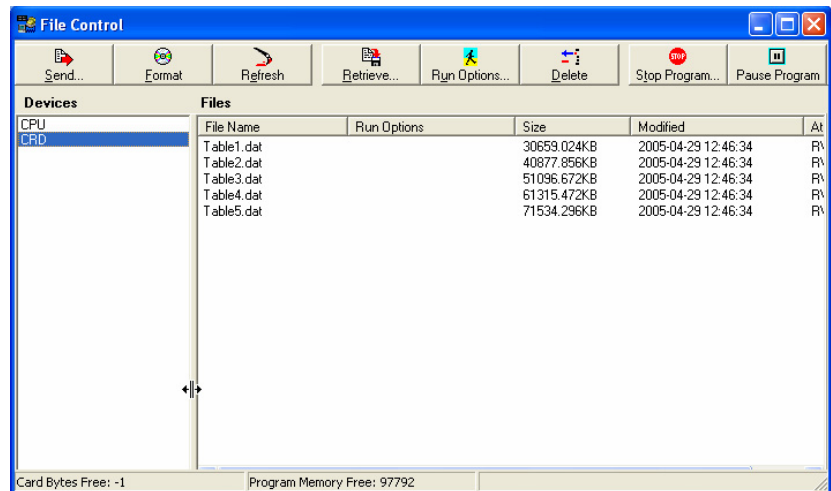
- 1) Insert CF card into CFM100.
- 2) From Main Menu of CR1000KD, choose PCCard.
- 3) Choose Format Card..
- 4) Choose Yes to proceed.

A.3 LoggerNet File Control

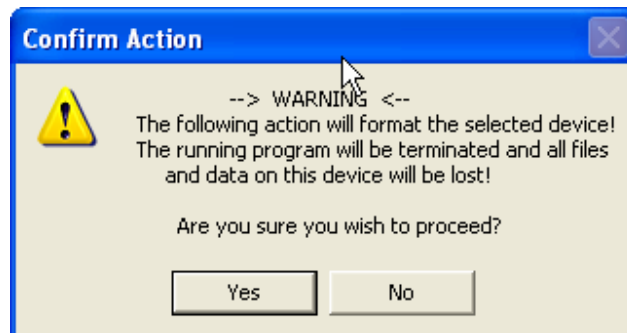
To format card using LoggerNet File Control:

- 1) Insert CF card into CFM100.
- 2) Use LoggerNet to connect to datalogger

3) Choose FileControl under the Tools menu of the Connect screen.



- 4) Highlight CRD.
- 5) Press Format.
- 6) Press Yes to confirm.



Appendix B. PC/CF Card Information

PC or CompactFlash (CF) cards provide a relatively inexpensive, off-the-shelf means of retrieving data from many of our CRBasic dataloggers or expanding the on-board datalogger memory. The datalogger's memory can be expanded up to 2 Gbytes with the use of these cards. Some dataloggers can use either a PC or CF card, and others can only use a CF card with the appropriate expansion module. Table B-1 lists the compatibility between dataloggers and cards.

Datalogger	Card Slot	CF Card	PC Card
CR200	Not Available	Not Available	Not Available
CR800/850	Not Available	Not Available	Not Available
CR1000	CFM100 or NL115	Yes	No
CR3000	CFM100 or NL115	Yes	No
CR5000	Built In	Yes, with Adaptor	Yes
CR9000(X)	Built In	Yes, with Adaptor	Yes

PC/CF cards use NAND (Not AND) Flash (non-volatile) memory which has the following characteristics: high density, low cost/bit, sequential access, scalable, and a single standard. There are two types of NAND Flash memory: Single-Level Cell (SLC) and Multi-Level Cell (MLC). SLC NAND Flash sometimes called Binary Flash, store one bit of data per memory cell and has two states: erased (1) or programmed (0). MLC NAND Flash store two bits of data per memory cell and has four states: erased (11), two thirds (10), one third (01), or programmed (00)¹. At first glance, the MLC cards seem more desirable, because each cell can hold more information. However, as summarized in Table B-2, the increased data storage comes at a price, mainly speed.

	SLC	MLC
Voltage	3.3 V / 1.8 V	3.3 V
Page Size / Block Size	2KB / 128KB	512 B / 32 KB or 2 KB / 256 KB
Access Time (maximum)	25 μ s	70 μ s
Page Program Time	250 μ s	1.2 ms
Partial Programming	Yes	No
Endurance	100,000	10,000
Write Data Rate	8 MB/s+	1.5 MB/s

There is a notable performance difference between the two types of NAND Flash memory. In a performance study by Samsung Electronics², Samsung

found that SLC outperformed MLC, offering greater durability, running 300% faster in write mode, and 43% faster in read mode. While MLC Flash increases the overall density of data storage, which therefore decreases cost; it does so at the expense of data reliability, performance and memory management. Furthermore, MLC technology is more prone to failure, data corruption, or incorrect reading due to memory cell degradation from the additional energy required during operations².

There are two types of CF cards available today: Industrial grade and Standard or Commercial grade. Industrial grade PC/CF cards are held to a higher standard; specifically they operate over a wider temperature range, offer better vibration and shock resistance, and have faster read/write times than their commercial counterparts (Table B-3). The Industrial Grade cards more closely match the operating envelope of the dataloggers, and for this reason we recommend you always use extended temperature tested, Industrial Grade PC/CF cards with a datalogger.

	Industrial Grade Cards	Commercial Grade Cards
Operating Temperature	-40 to +85°C	0 to +70°C
Vibration Proofing	30 Gs	15 Gs
Shock Resistance	2000 Gs	1000 Gs
MTBF	>3,000,000 hours	>1,000,000 hours
Type of NAND Flash Memory	SLC	MLC typically but some SLC

All Campbell Scientific products are Electrostatic Discharge (ESD) tested to ensure that in the event of a static discharge neither the equipment nor the data is damaged or lost. Campbell Scientific ESD tested several brands of cards, only the Silicon Systems cards passed this testing. Campbell Scientific recommends that only Silicon Systems cards be used with Campbell Scientific CRBasic dataloggers. It is not necessary to purchase the cards directly from Campbell Scientific, as long as the Silicon Systems card model number matches Table B-4.

Card Type	Size (Mbytes)	Silicon Systems (model number)	Campbell Scientific (model number)
CF	64	SSD-C64MI-3038	CFMC64M
CF	256	SSD-C25MI-3038	CFMC256M
CF	1024	SSD-C01GI-3038	CFM1GM
CF	2048	SSD-C02GI-3038	Not Available
PC	1024	SSD-P01GI-3038	Not Available
PC	2048	SSD-P02GI-3038	Not Available

References

1. “Implementing MLC NAND Flash for Cost-Effective, High-Capacity Memory”, written by Raz Dan and Rochelle Singer, September 2003, Rev 1.1,
www.data-io.com/pdf/NAND/MSystems/Implementing_MLC_NAND_Flash.pdf.
2. “Advantages of SLC NAND Flash Memory”,
www.mymemory.com.my/SLC%20VS%20MLC.html.

Campbell Scientific Companies

Campbell Scientific, Inc. (CSI)

815 West 1800 North
Logan, Utah 84321
UNITED STATES
www.campbellsci.com • info@campbellsci.com

Campbell Scientific Africa Pty. Ltd. (CSAf)

PO Box 2450
Somerset West 7129
SOUTH AFRICA
www.csafrica.co.za • cleroux@csafrica.co.za

Campbell Scientific Australia Pty. Ltd. (CSA)

PO Box 444
Thuringowa Central
QLD 4812 AUSTRALIA
www.campbellsci.com.au • info@campbellsci.com.au

Campbell Scientific do Brazil Ltda. (CSB)

Rua Luisa Crapsi Orsi, 15 Butantã
CEP: 005543-000 São Paulo SP BRAZIL
www.campbellsci.com.br • suporte@campbellsci.com.br

Campbell Scientific Canada Corp. (CSC)

11564 - 149th Street NW
Edmonton, Alberta T5M 1W7
CANADA
www.campbellsci.ca • dataloggers@campbellsci.ca

Campbell Scientific Centro Caribe S.A. (CSCC)

300 N Cementerio, Edificio Breller
Santo Domingo, Heredia 40305
COSTA RICA
www.campbellsci.cc • info@campbellsci.cc

Campbell Scientific Ltd. (CSL)

Campbell Park
80 Hathern Road
Shephed, Loughborough LE12 9GX
UNITED KINGDOM
www.campbellsci.co.uk • sales@campbellsci.co.uk

Campbell Scientific Ltd. (France)

Miniparc du Verger - Bat. H
1, rue de Terre Neuve - Les Ulis
91967 COURTABOEUF CEDEX
FRANCE
www.campbellsci.fr • info@campbellsci.fr

Campbell Scientific Spain, S. L.

Avda. Pompeu Fabra 7-9, local 1
08024 Barcelona
SPAIN
www.campbellsci.es • info@campbellsci.es

Please visit www.campbellsci.com to obtain contact information for your local US or International representative.